

**GLOBAL  
TRENDS**  
FORCED  
DISPLACEMENT  
IN **2022**



DATI E QUADRO DI  
INSIEME

---

*Migrazione in condizioni di  
emergenza: rifugiati e  
richiedenti asilo*

# Trends at a Glance

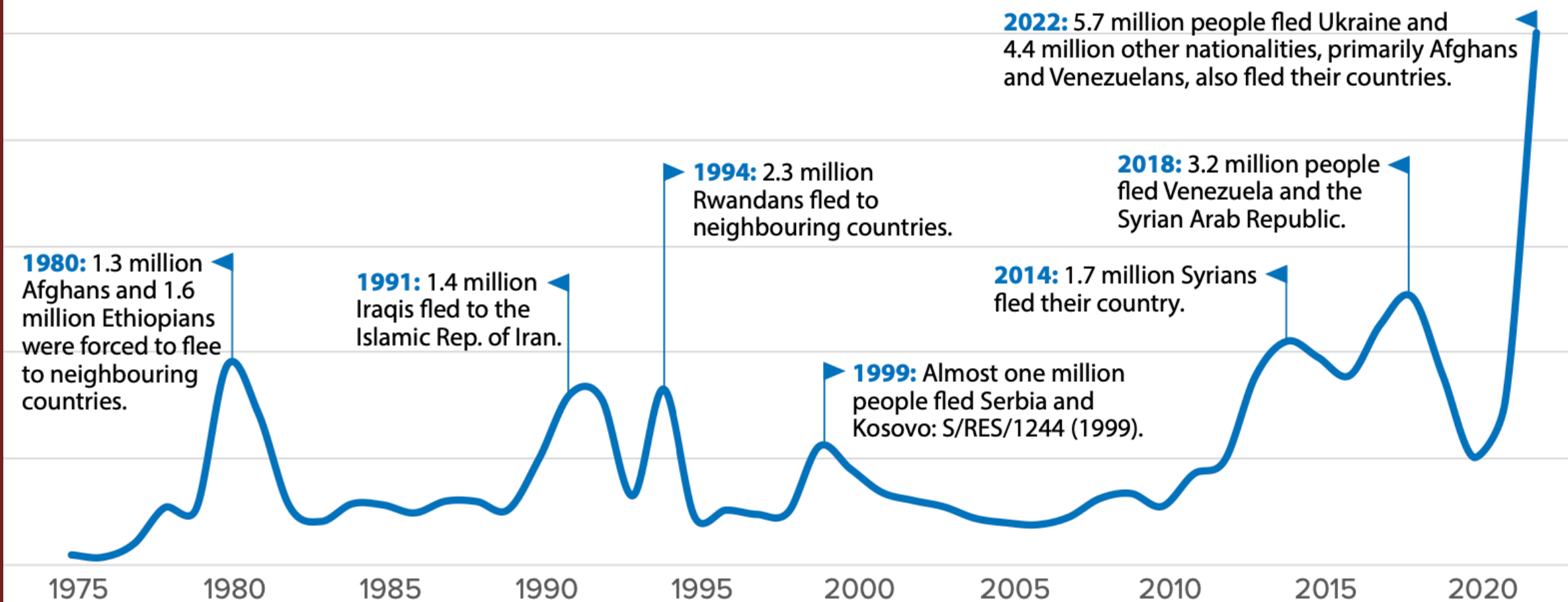


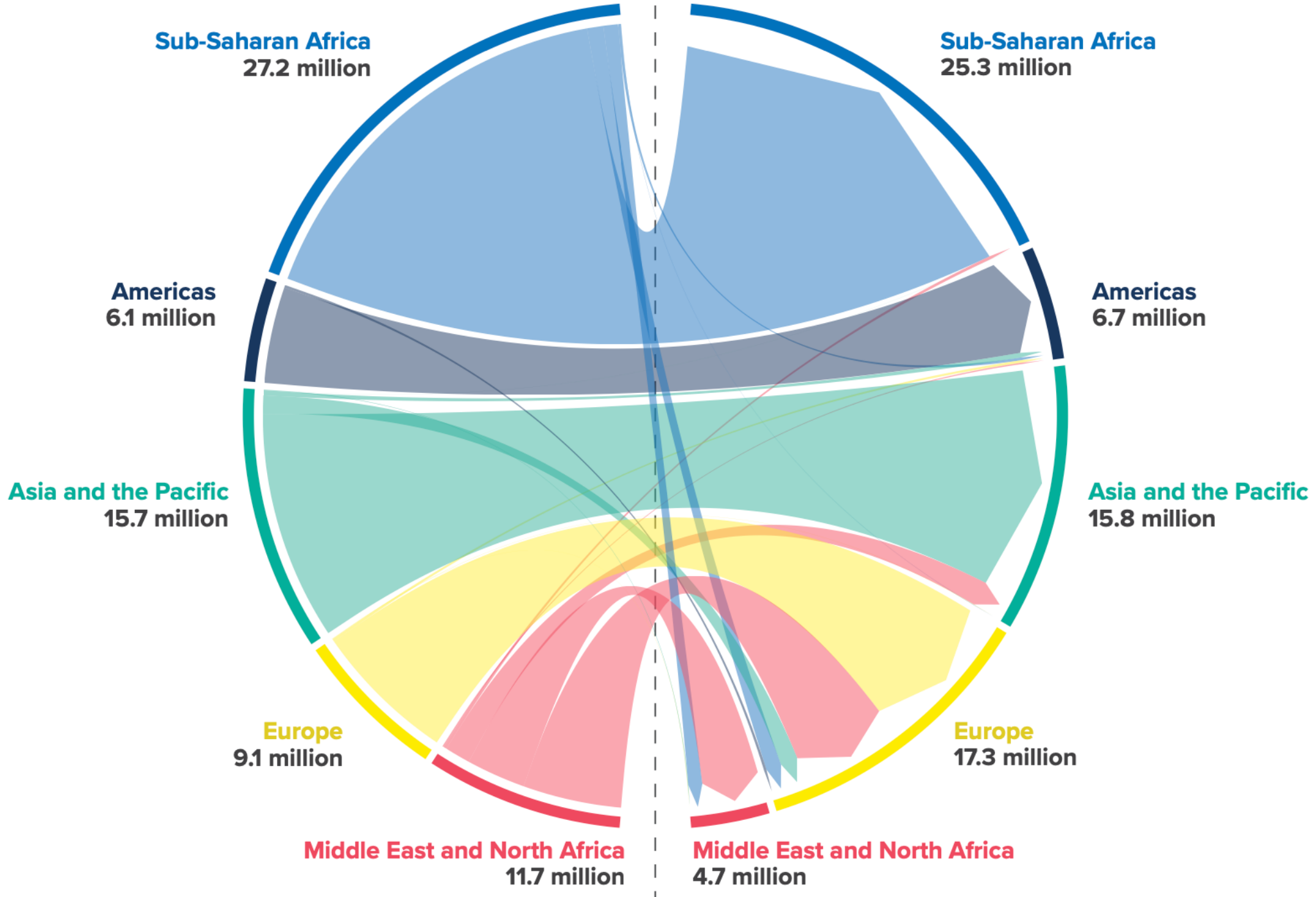
**76%**  
HOSTED IN LOW-  
AND MIDDLE-INCOME  
COUNTRIES

**3.6** MILLION  
REFUGEES HOSTED  
IN TÜRKİYE

**1** IN **6**  
ARE DISPLACED  
Relative to their national populations,<sup>6</sup>

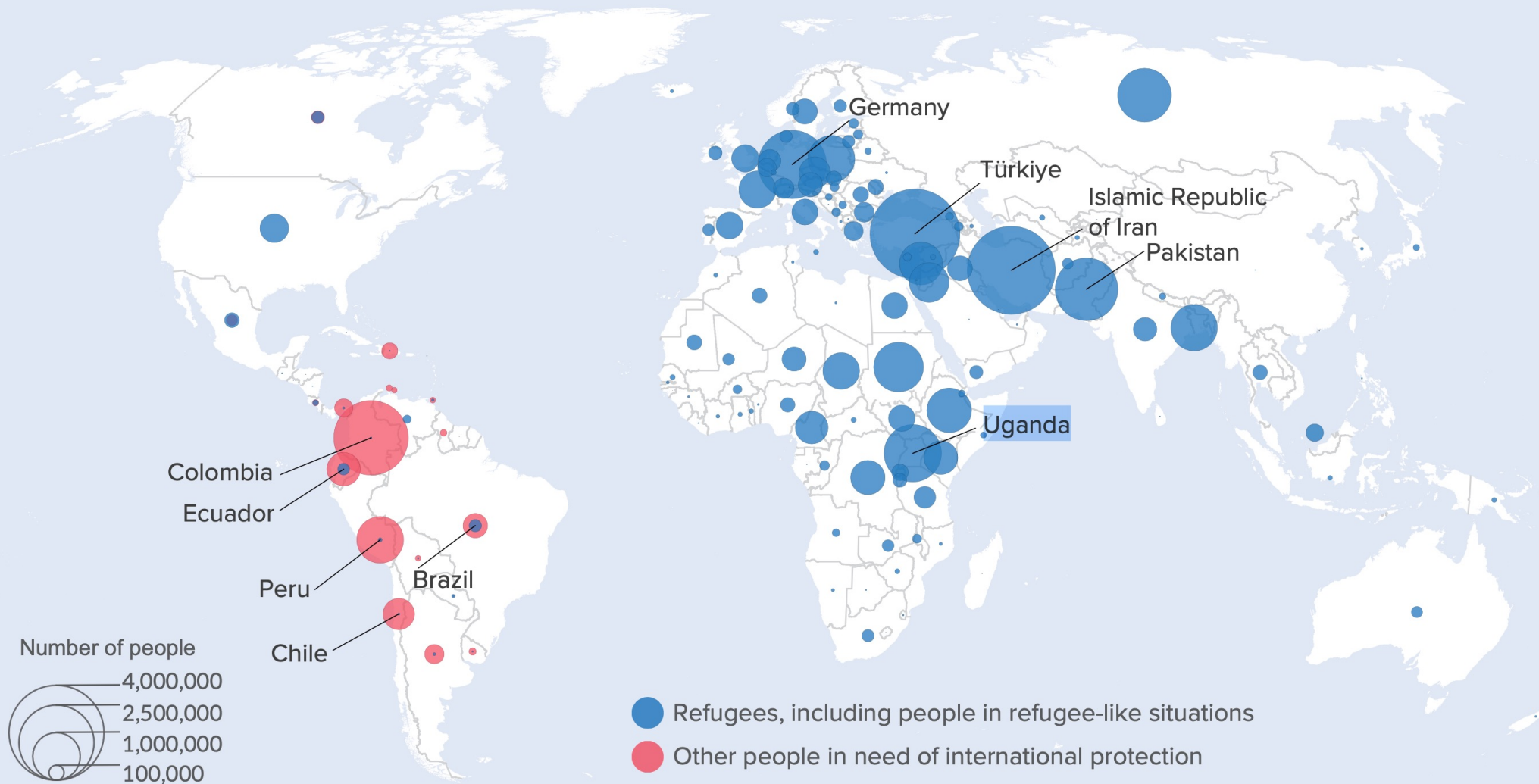
# 1 | Refugees, asylum-seekers and other people in need of international protection displaced each year<sup>15</sup> | 1975 – 2022







# Map 1 | Refugees, people in refugee-like situations and other people in need of international protection | end-2022



A country is named if it features among the five largest per population group.

The boundaries and names shown and the designations used on this map do not imply official endorsement or acceptance by the United Nations.

Figure 11 | Refugees, people in refugee-like situations and other people in need of international protection by host country | end-2022

