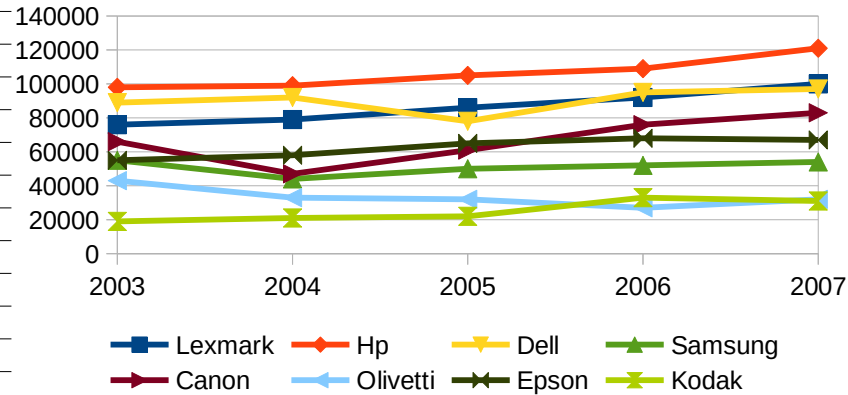


Es. Risolto

	A	B	C	D	E	F	G	H	I	J	K
1	Vendite stampanti										
2			Percentuali		Percentuali		Percentuali		Percentuali		Percentuali
3		2003		2004		2005		2006		2007	
4	Lexmark	76000	15,170%	79000	16,702%	86000	17,234%	92000	16,667%	100000	17,094%
5	Hp	98000	19,561%	99000	20,930%	105000	21,042%	109000	19,746%	121000	20,684%
6	Dell	89000	17,764%	92000	19,450%	78000	15,631%	95000	17,210%	97000	16,581%
7	Samsung	55000	10,978%	44000	9,302%	50000	10,020%	52000	9,420%	54000	9,231%
8	Canon	66000	13,174%	47000	9,937%	61000	12,224%	76000	13,768%	83000	14,188%
9	Olivetti	43000	8,583%	33000	6,977%	32000	6,413%	27000	4,891%	32000	5,470%
10	Epson	55000	10,978%	58000	12,262%	65000	13,026%	68000	12,319%	67000	11,453%
11	Kodak	19000	3,792%	21000	4,440%	22000	4,409%	33000	5,978%	31000	5,299%
12											
13	Totale	501000		473000		499000		552000		585000	
14											
15	Somma delle vendite >50000	439.000		328.000		395.000		492.000		522.000	
16											
17											

Vendita stampanti



Vendita anni 2003, 2004, 2005

