

MORFOLOGIA DELLE CONFIGURAZIONI DEI CLASSIFICATORI DELLA LIS

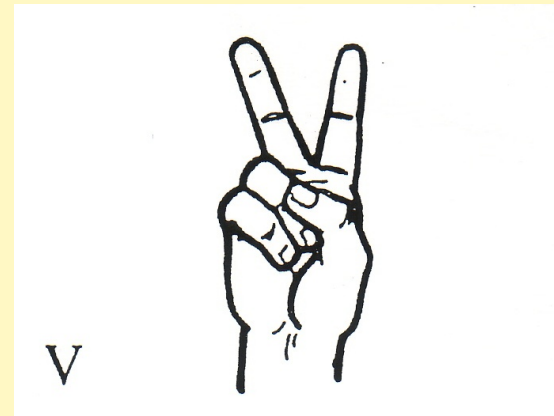
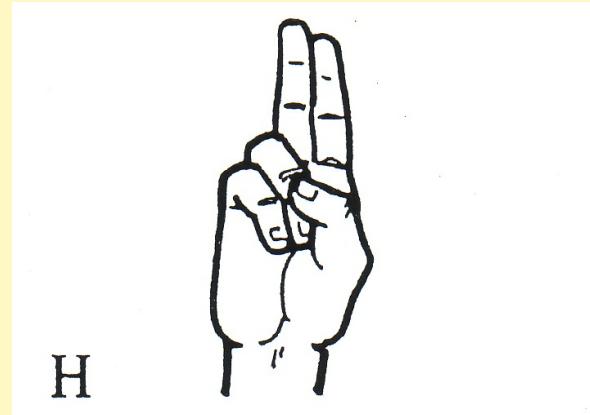
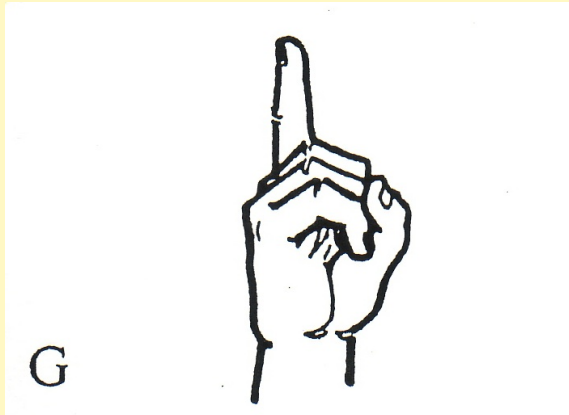
di Serena Corazza, 1990

**in “Sign Language Research: Theoretical Issues”, Editor
Ceil Lucas, Gallaudet University Press, 1990**

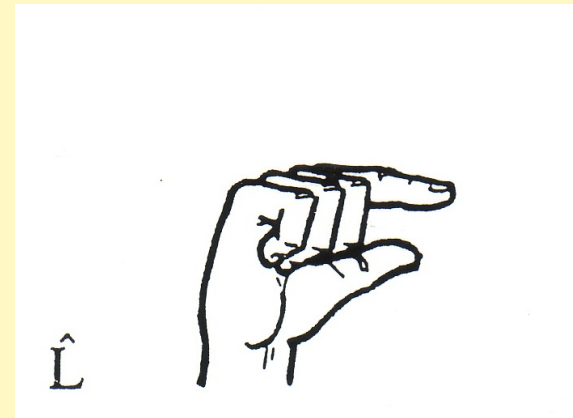
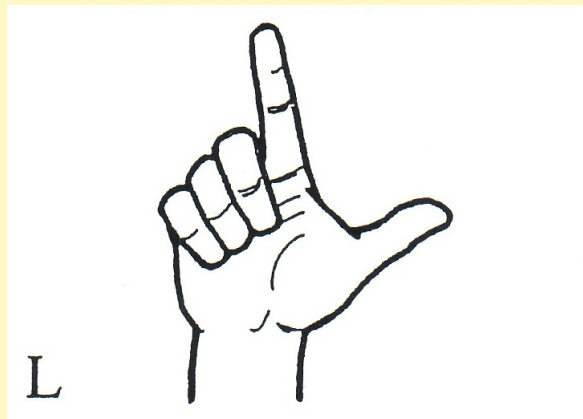
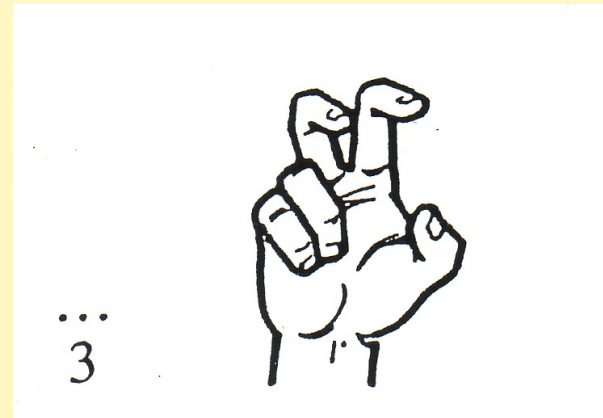
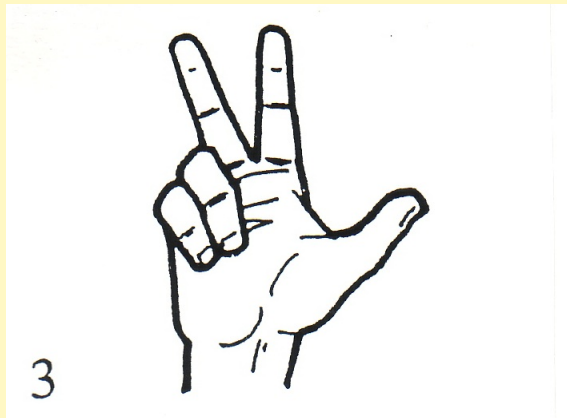
I Classificatori

- di afferramento
- di superficie
- descrittivi
- di perimetro
- di quantità

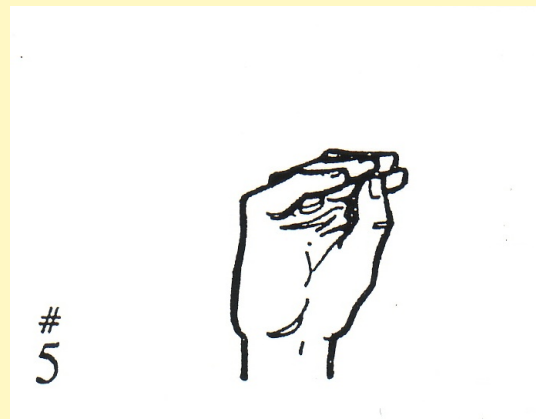
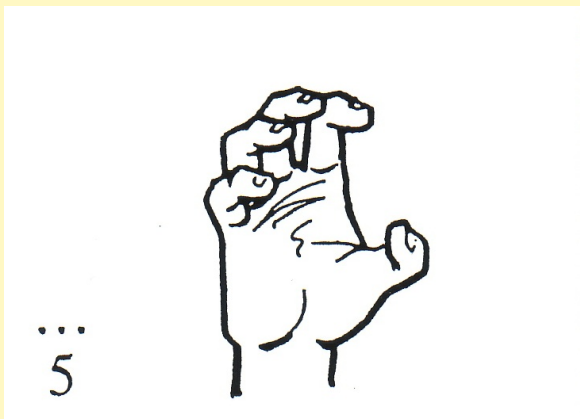
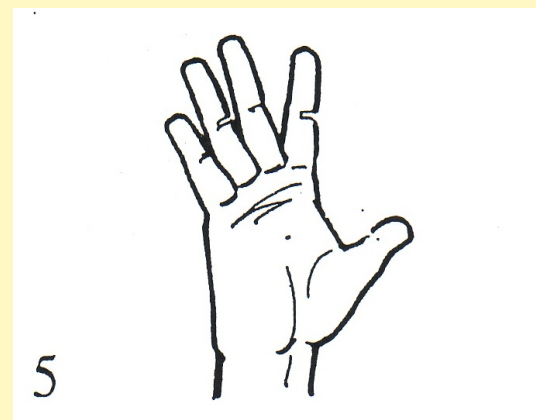
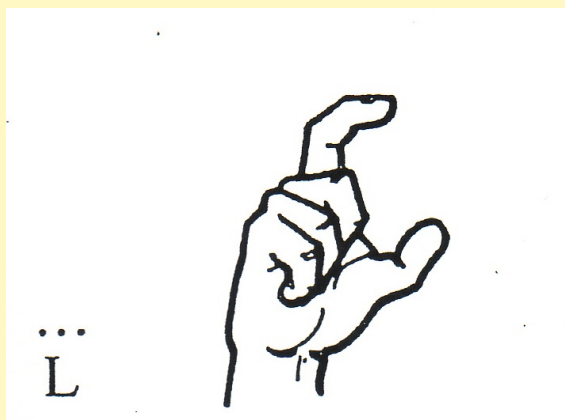
I Classificatori di superficie



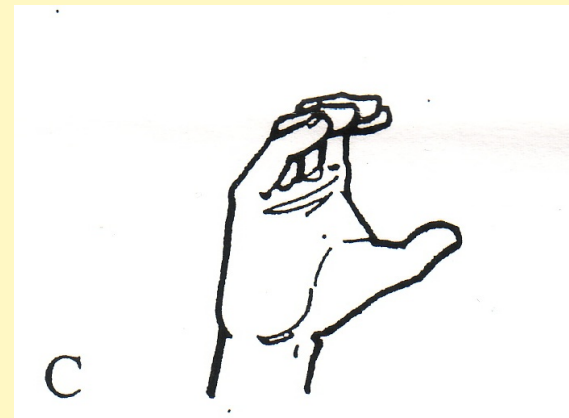
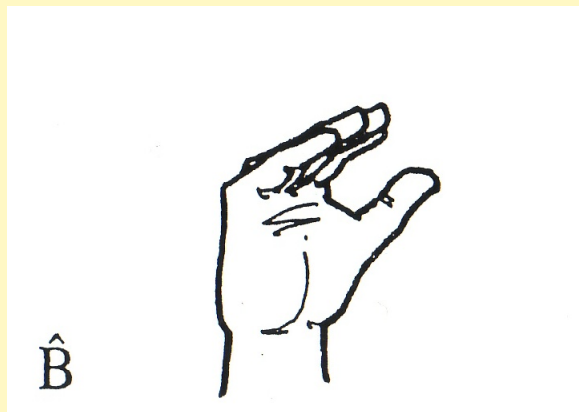
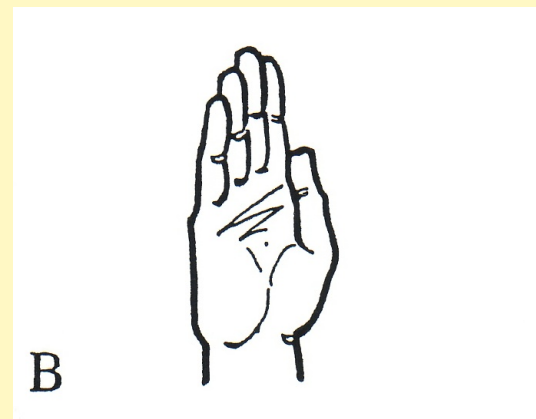
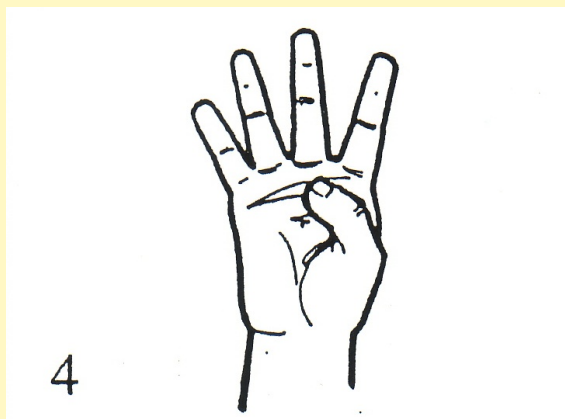
I Classificatori di superficie



I Classificatori di superficie



I Classificatori di superficie



I Classificatori di superficie

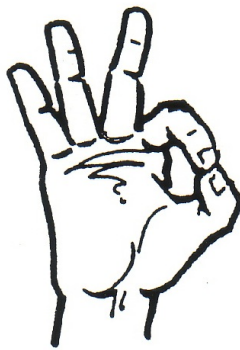
G



As



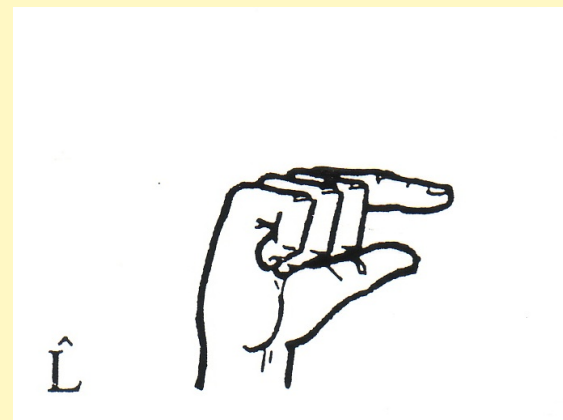
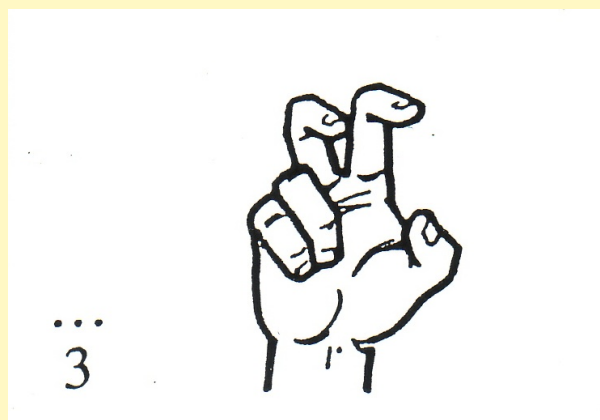
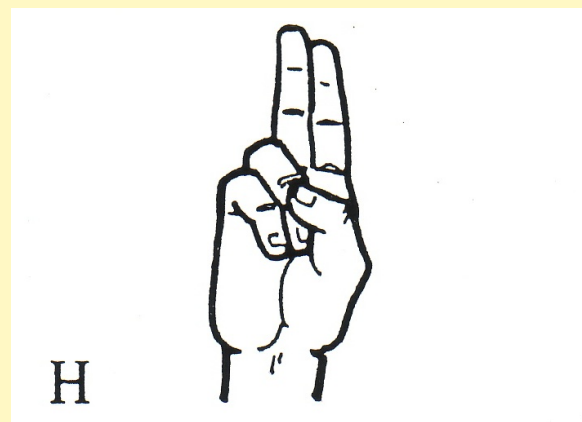
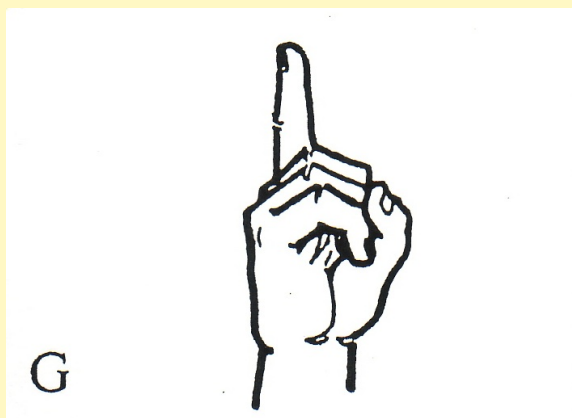
F



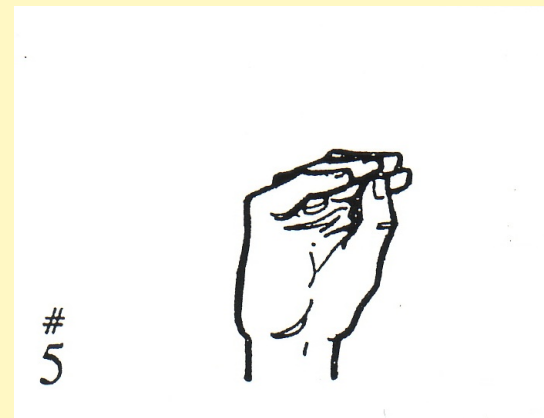
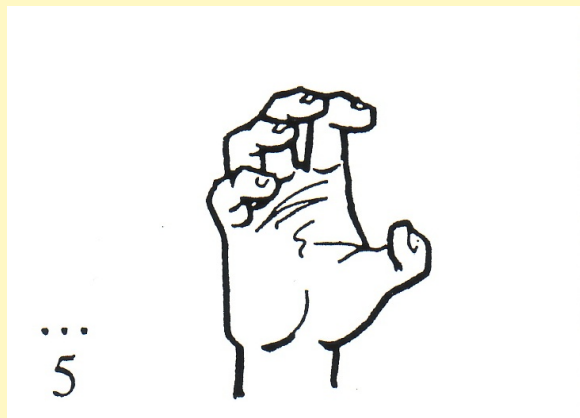
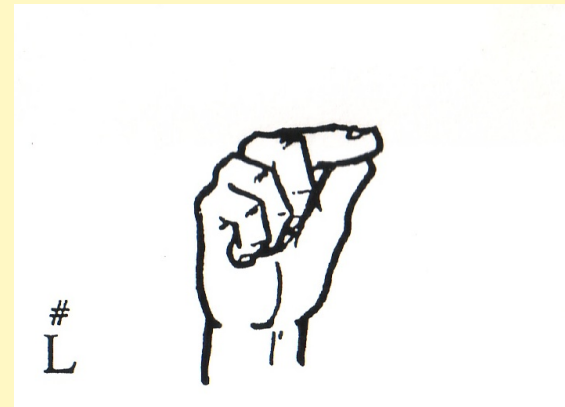
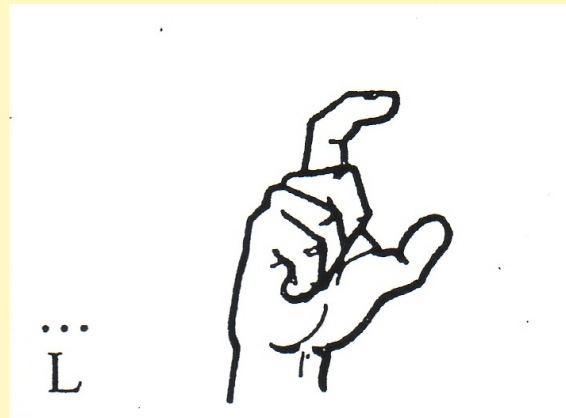
V



I Classificatori di afferramento

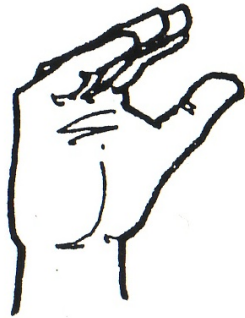


I Classificatori di afferramento



I Classificatori di afferramento

\hat{B}



C



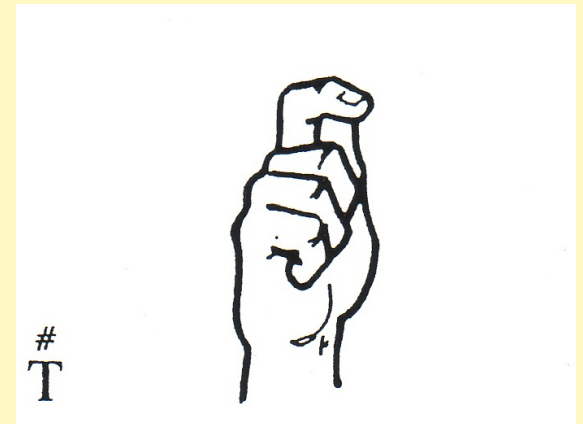
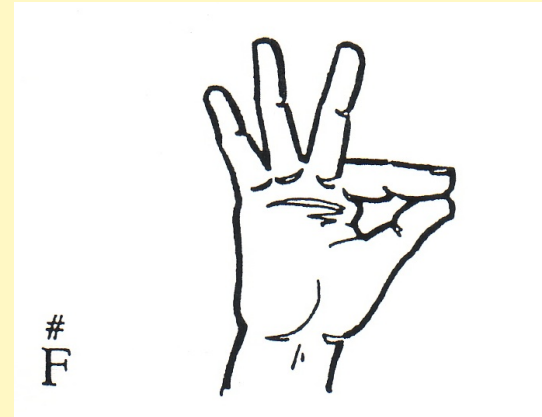
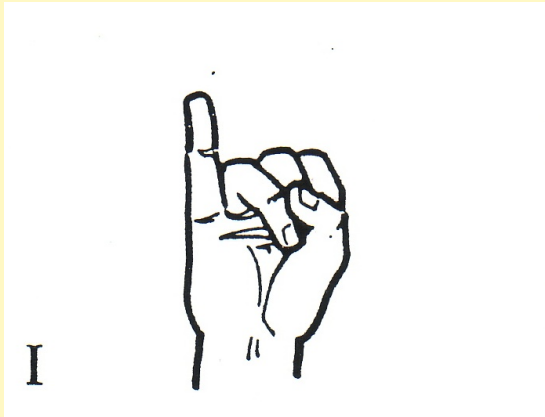
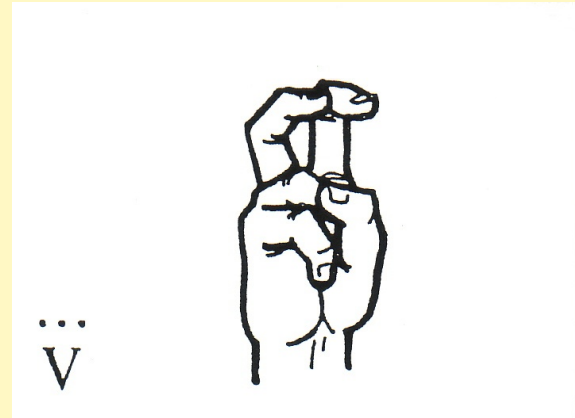
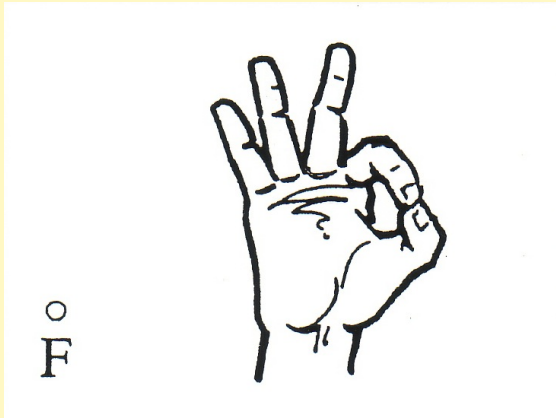
\ddot{G}



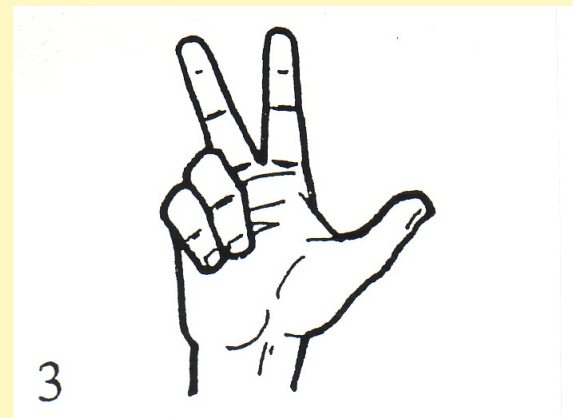
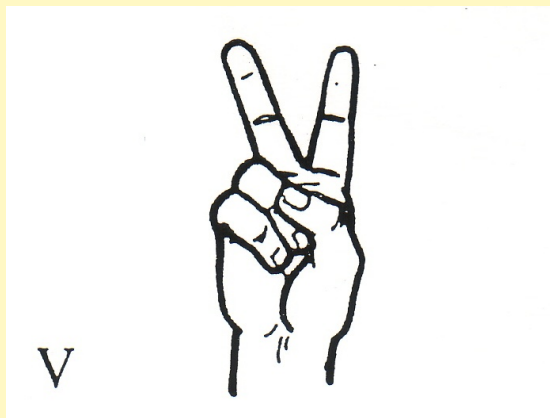
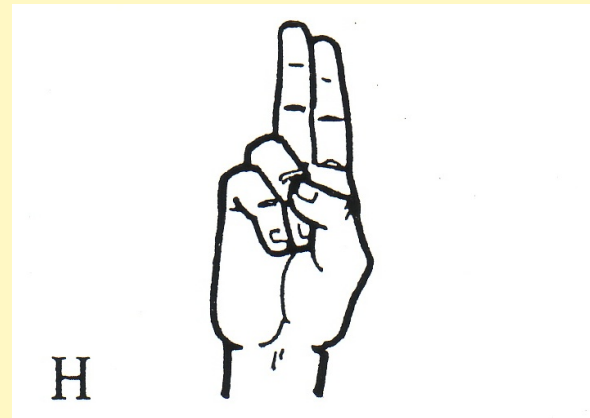
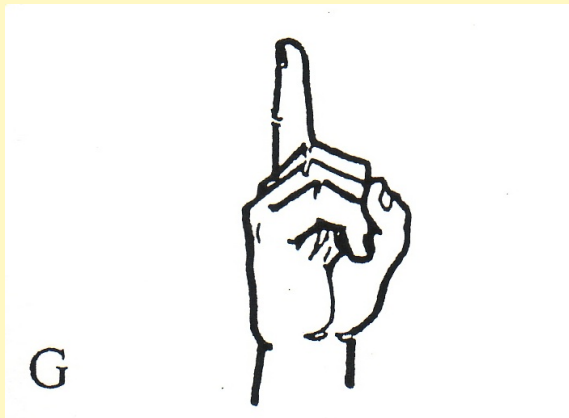
As



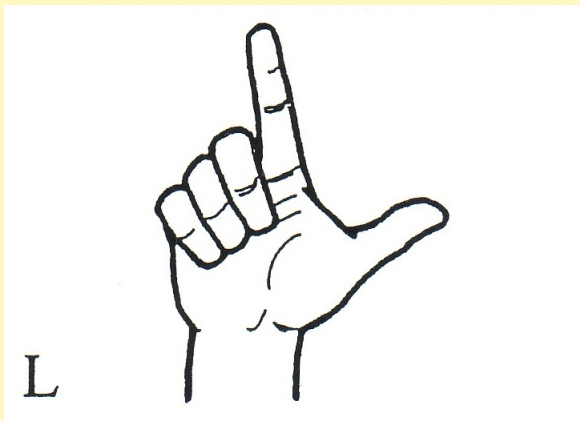
I Classificatori di afferramento



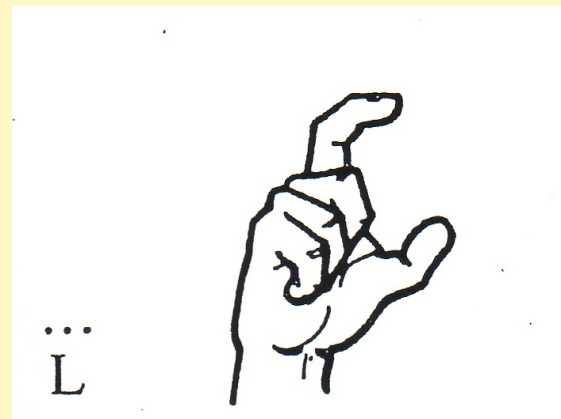
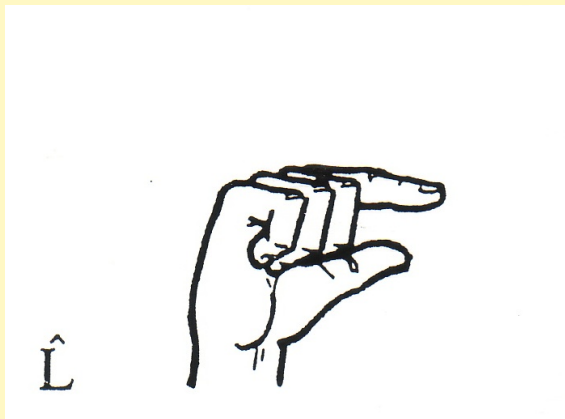
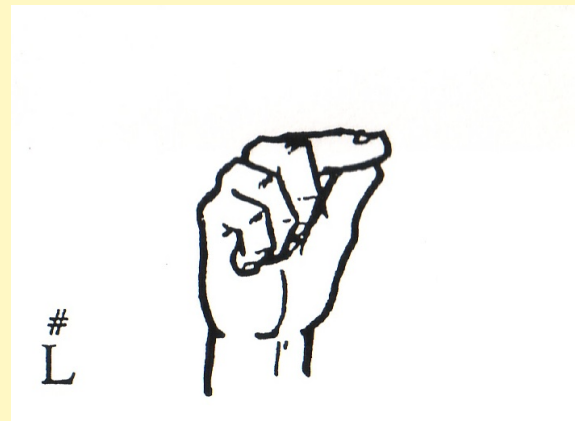
I Classificatori descrittivi



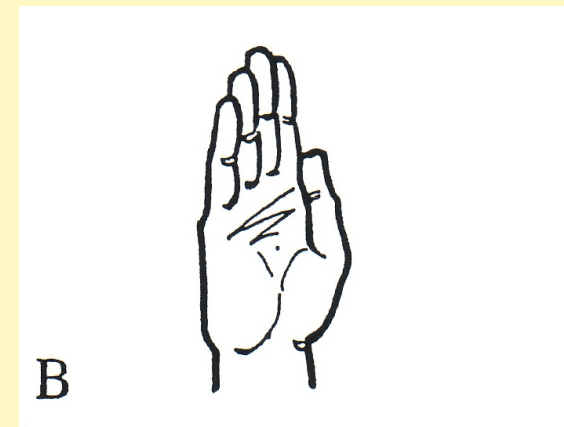
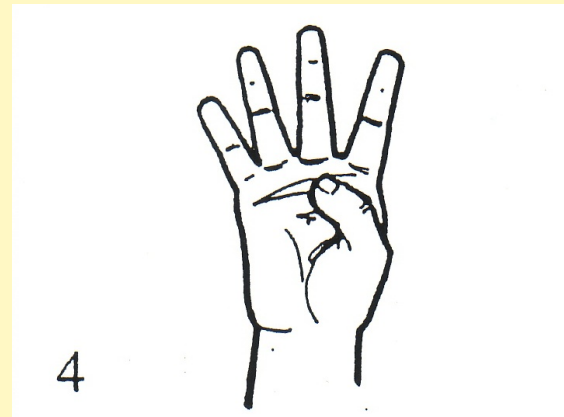
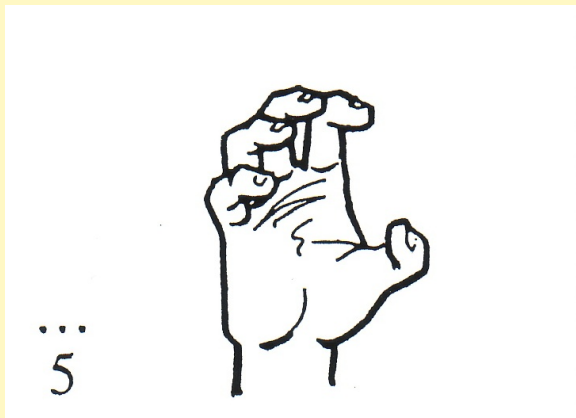
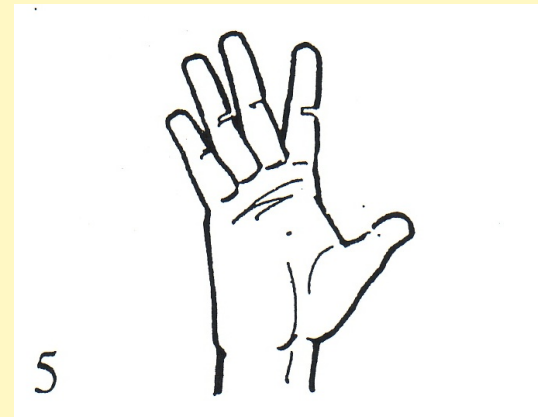
I Classificatori descrittivi



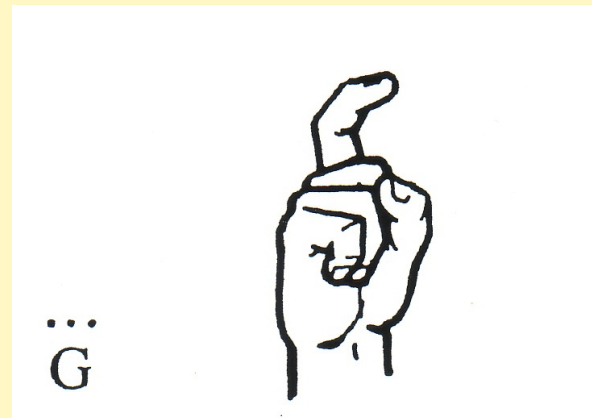
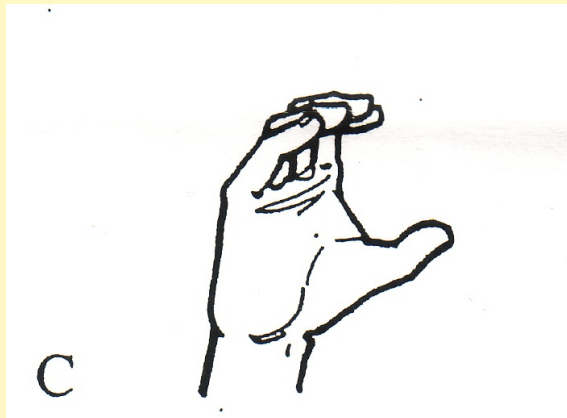
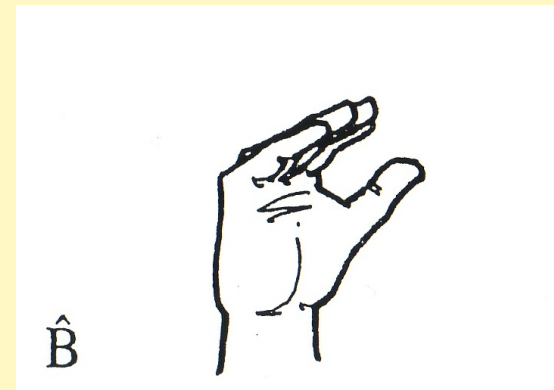
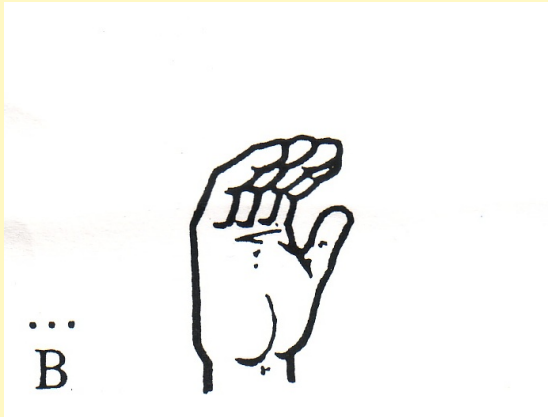
->



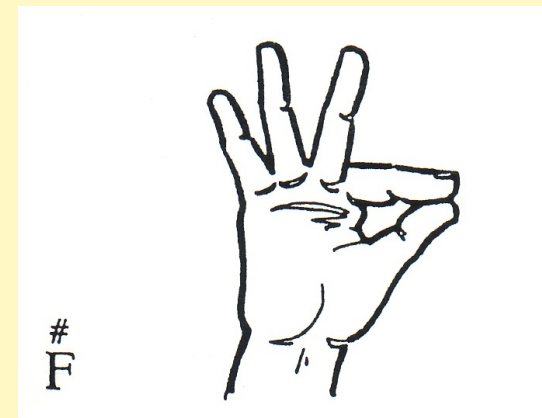
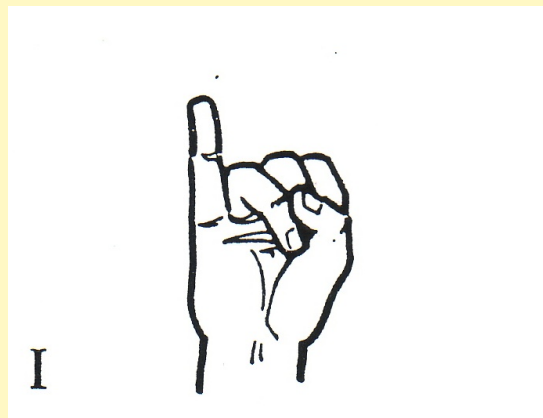
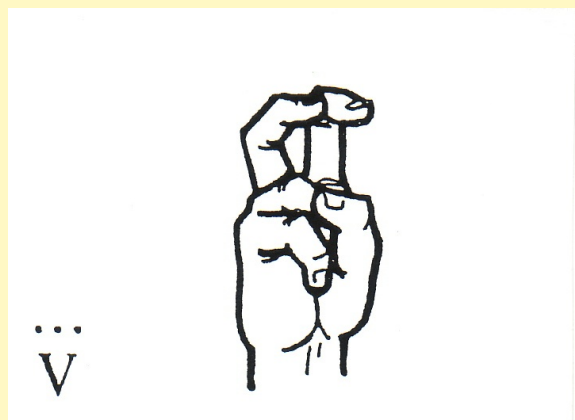
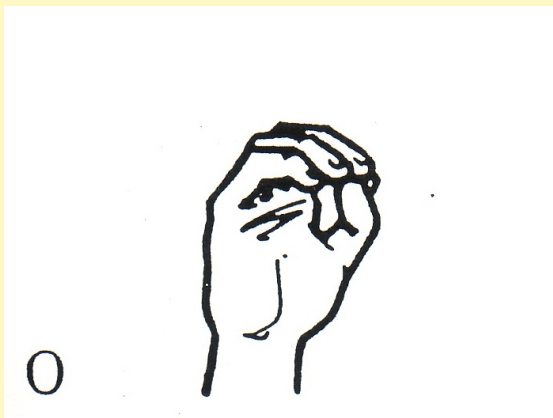
I Classificatori descrittivi



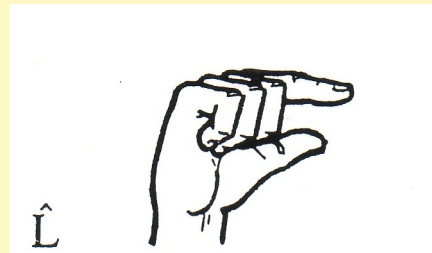
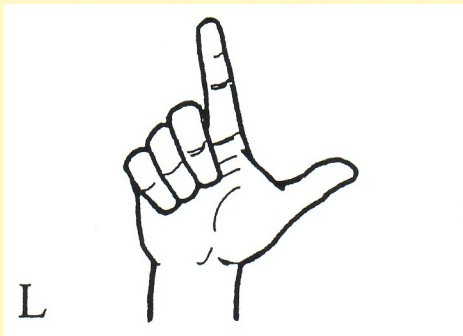
I Classificatori descrittivi



I Classificatori descrittivi



I Classificatori di quantità



I Classificatori di quantità

B_o



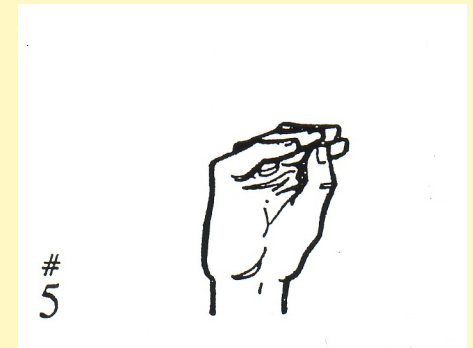
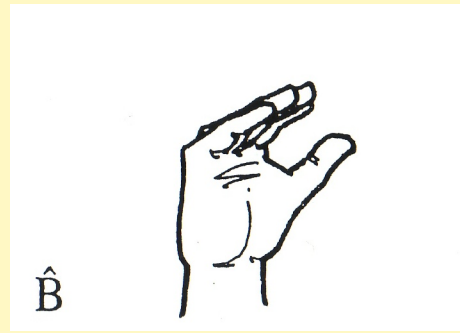
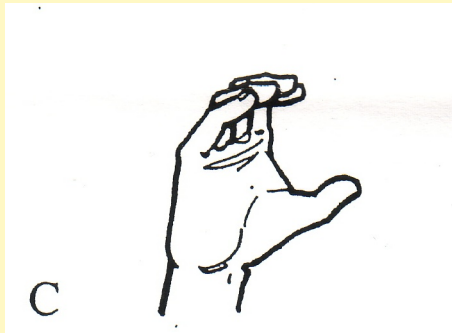
B̂



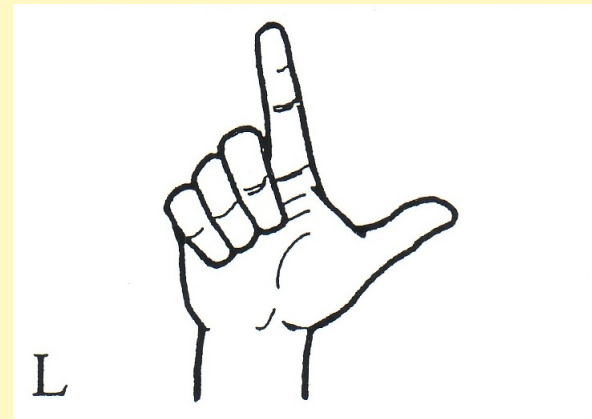
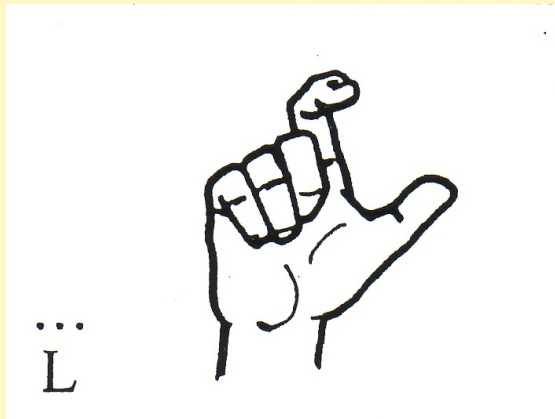
5



I Classificatori di quantità



I Classificatori di perimetro



I Classificatori

- **Tipi di movimento:**
 - **stativo**
 - **processo**
 - **descrittivo**
- **Classi di configurazioni:**
 - **di afferramento**
 - **di superficie**
 - **descrittiva**
 - **di perimetro**
 - **di quantità**

Classi di Configurazioni:	Tipo movimento: STATIVO	Tipo movimento: PROCESSO	Tipo movimento: DESCRITTIVO
AFFERRAMENTO		X	
SUPERFICIE	X	X	
DESCRITTIVA			X
PERIMETRO	X	X	
QUANTITA'		X	